

Activator wand and booster

Shown: RA-1061, B-81



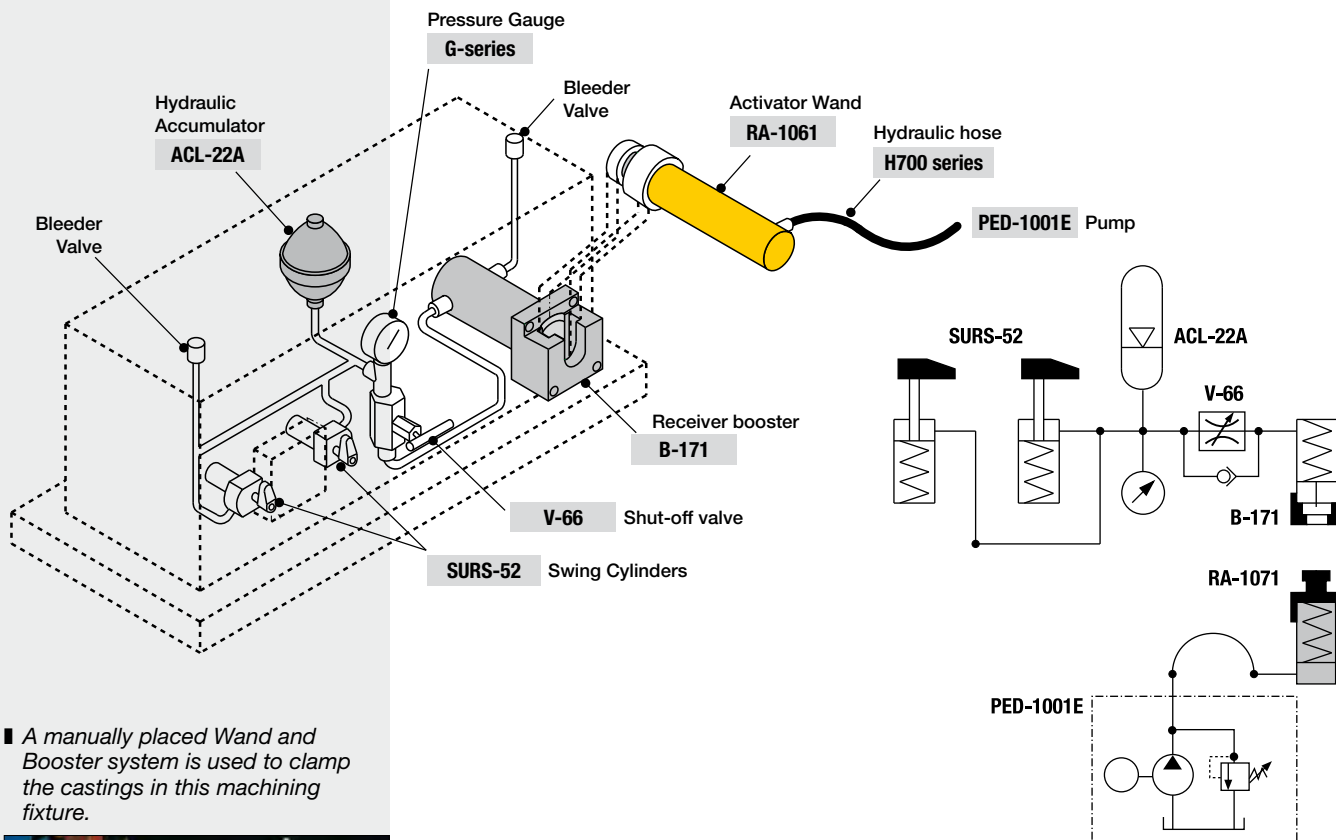
B and RA-series
Mechanical energy transfer system uses external cylinder to operate receiver booster.

Contamination resistant closed hydraulic system

- No-leak palletized system, eliminates oil loss at connection point
- Closed design prevents machining chips and coolant from entering the hydraulic circuit
- Booster can be mounted in either horizontal or vertical position for flexible fixture design.

Hydraulic system schematics

The Activator Wand RA-1061 is placed into the receiver booster B-81 or B-171. The mechanical transfer of force from the activator wand plunger to the booster piston provides oil flow to the system.

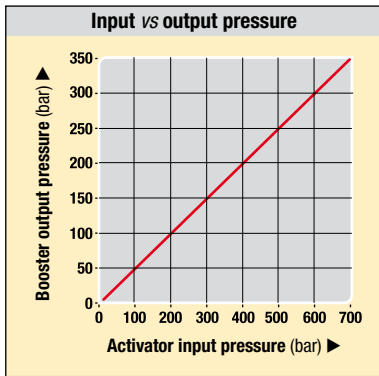


■ A manually placed Wand and Booster system is used to clamp the castings in this machining fixture.



Product selection

Pressure ratio	Oil flow ratio	Oil volume per stroke	Stroke	Model number	Effective area	Operating pressure	
		cm ³	mm		cm ²	bar	kg
▼ Receiver booster							
2 : 1	1,75 : 1	132,7	51,8	B-81	25,7	30 - 350	5,7
2 : 1	1,75 : 1	280,2	109,2	B-171	25,7	30 - 350	7,1
▼ Activator wand							
-	-	162,2	112,7	RA-1061	14,4	60 - 700	5,1

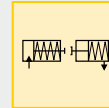


Ratio: 2 : 1

Stroke: 51,8 - 112,7 mm

Pressure: 30 - 350 bar

- E** Multiplicadores
- F** Multiplicateur
- D** Betätigungszyylinder und Druckverstärker



Options

Fittings

194 ▶



Hoses and couplers

192 ▶



For 700 bar pumps, refer to the Enerpac Industrial Tools Catalog E327e.



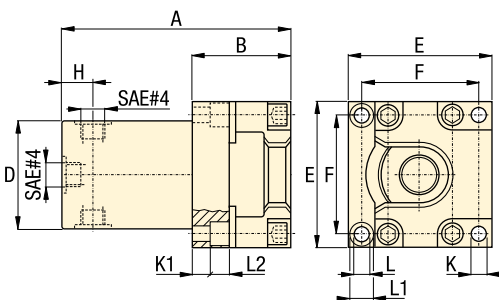
Existing fixtures with manual-connect single-acting circuits can be easily upgraded into the wand and booster.

Important

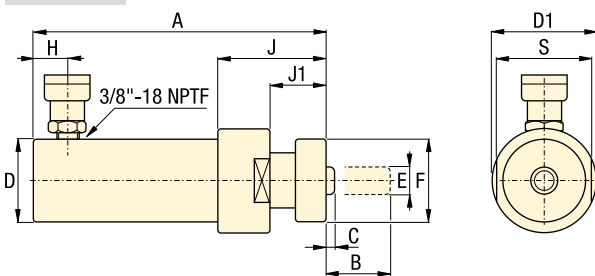
The activator wand has a 2 to 1 ratio of input pressure versus output force.

The booster output flow is 1,75 times the wand input flow.

B-81, -171



RA-1061



Product dimensions in mm [\pm]

Model number	A	B	C	D	D1	E	F	H	J	J1	K	K1	L	L1	L2	S
▼ Receiver booster																
B-81	174,2	69,6	44,2	76,2	-	101,6	82,6	28,4	-	-	10,4	57,4	10,4	15,7	10,7	-
B-171	231,6	69,6	44,2	76,2	-	101,6	82,6	28,4	-	-	10,4	57,4	10,4	15,7	10,7	-
▼ Activator wand																
RA-1061	295,1	117,6	4,8	57,2	76,2	19,1	58,9	19,1	76,7	38,9	-	-	-	-	-	69,9